

LOTUS SERIES



Lotus

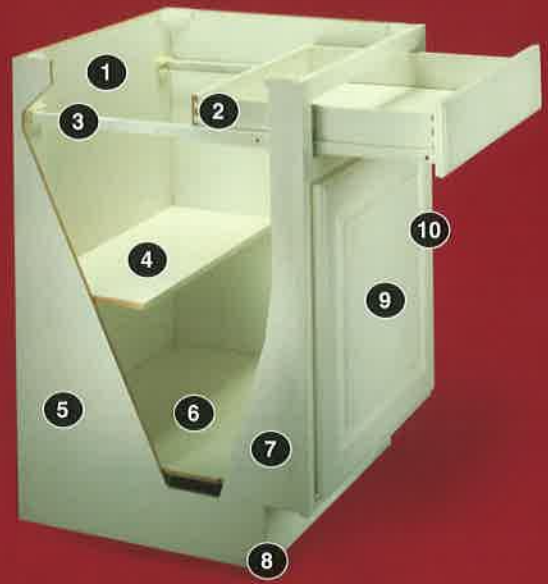
Sleek, clean lines accent the boldness of true contemporary elegance, a cabinet that satisfies the most discriminating tastes. Fully adjustable concealed hinges provide lifetime usefulness while adding to the unblemished appearance of **Lotus**. Full and standard overlay thermo-fused melamine doors and drawer fronts complement standard hardwood face frames. All are available in a variety of finishes or you may opt for the optional white/white Lotus which features a white finished hardwood face frame and complete white interior and exterior cabinet case.

FEATURES

1. Base and wall cabinets feature concealed hanging rails for a clean interior appearance.
2. 1/2" thick medium density fiberboard four sided drawer box with standard dovetailed construction for durability.
3. Fully adjustable epoxy coated drawer guide system features lifetime warranty.
4. 1/2" thick medium density fiberboard shelving dadoed into base end panels for strength.
5. Durable 3/8" thick medium density fiberboard end panels with UV coated maple woodgrain or white finish (depending on style) enhance interior.
6. 3/8" thick medium density fiberboard floors with UV coated maple woodgrain or white finish are dadoed into base and wall cabinet end panels.
7. Hardwood face frames feature durable pocket route and screw construction.
8. Internal toe kick strengthens construction and keeps underside of cabinet rodent proof.
9. Self closing, adjustable concealed hinges feature lifetime warranty.
10. Lexus comes as a full overlay. Lotus design is a standard overlay.

REQUIRES DECORATIVE HARDWARE- BY OTHERS

Shown on front page: Lotus full overlay in White/White finish. (Decorative hardware is not included.)



STYLES AVAILABLE

Lotus-Full Overlay



Lotus-Standard Overlay



HINGE STYLE



Value By Design



www.sacoindustries.com